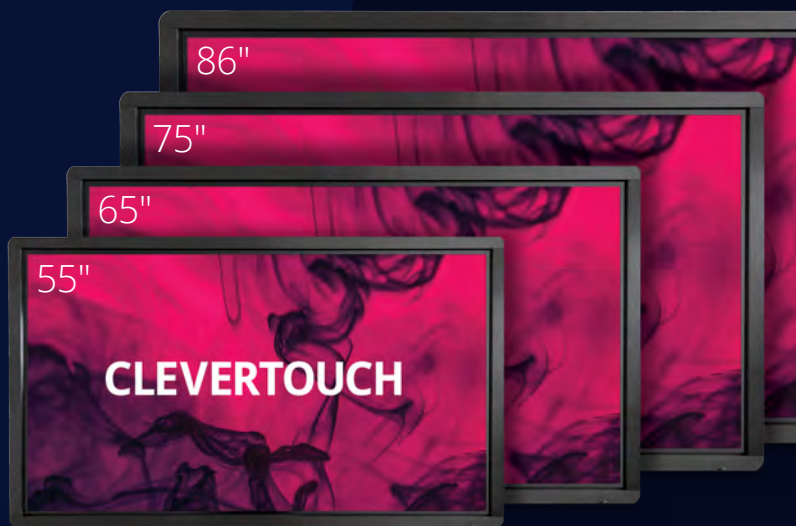


Plus Series

Interactive Flat Panel for Education

As the need grows for more collaborative learning spaces, so does the demand for technology in the classroom. Clevertouch is embracing immersive learning by providing smart digital classroom environments. Our complete classroom solution is easy to use, enables simple installation, and is designed for over 50,000 hours of use. With low maintenance and no ongoing subscriptions, Clevertouch provides a complete all in one solution.



The award winning all-in-one solution for an immersive learning experience



Interactive Product of the Year

AV News Awards 2018 – Winner



Digital Devices

BETT Awards 2019 – Finalist



Tech & Learning Best in show

Tech and Learning 2018 – Winner



Interactive Product of the Year

AV Awards 2017 – Winner



Manufacturer of the Year

AV Awards 2015 – Winner



Subscription free software to increase student engagement

Our range of software is designed to engage students and simplify the lesson planning process. Share resources with other teachers and make the most of pre-made lesson and activity templates. Both Lynx and Snowflake MultiTeach are designed with input from educators, enabling teachers to seamlessly collate media and resources to produce innovative lessons.



Apps for connected learning

With content in a variety of languages, for all ages and subjects, and with additional resources available to download for free, Clevertouch makes creating exciting lessons simple for teachers. Cleverstore contains hundreds of apps – all free to download, with no adverts or inappropriate content. All of the apps have been tested by our App team to ensure they meet curriculum requirements.



Screen mirroring with built-in teacher controls

Clevershare App is free to download and compatible with Android, Windows, iOS and Chrome devices. Up to 50 devices can connect with the Clevertouch screen and share content – images, video, and audio. The presenter has full control over what is shared, and can show up to 4 device screens simultaneously, increasing student collaboration and participation within every lesson.



Making integration and installation easier

Clevertouch interactive touchscreens are designed to integrate with your current system set up and work with your current software. With remote management tools, increased security and network options, and the most comprehensive warranty on the market, Clevertouch offers long-term savings and increased return on investment.



A natural and fluid writing experience

Our Super Glide Surface technology provides a natural and fluid writing experience, reminiscent of a pen and whiteboard. High precision touch pens are included, to facilitate dual-pen writing with no lag. Erase with your palm. Pinch and pull to zoom. Switch between finger-touch, pen, and dual-pen instantly without needing to alter settings.



Send messages, alerts and media to all of your Clevertouch screens remotely

With the new Clever Message App send dynamic digital signage messages to all, individual or groups of your Clevertouch screens. Your IT department or office can create messages using full-screen, easy to populate templates, produce live-video messages from the school principal, instructions during a fire drill, building maintenance information, daily news and general announcements.

Connecting people with technology

NEW

Remote management

Control all your screens from a single device.

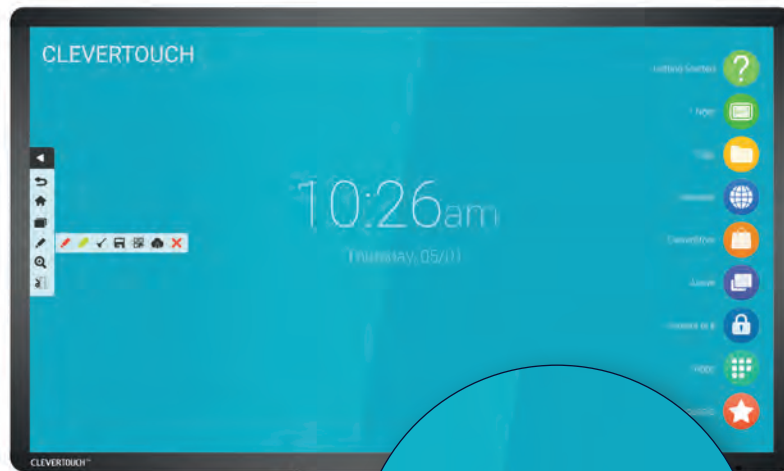
NEW

Super glide surface

Smooth glass for a fluid writing experience.

Compatible

Compatible with **Windows**, **Mac OS X**, **macOS** and **Chromebook**.



NEW

High precision touch

Improved stylus recognition and assign colors to multiple pens.

NEW

Cloud accounts

Connect instantly to your Google Drive or OneDrive accounts.

NEW

Clever Account profile

Access your apps, settings and files from your NFC Key fob.

Clevertouch Features



Fully customizable



Local team with expert knowledge



Comprehensive warranty



20-point touch



Energy efficient



No software subscription fees



4K resolution display



Smart personalized profile



Remote management



OTA (Over the air) updates



Integrated speakers



Powered by Android



LUX user interface



No shadow



Anti-glare glass



HDMI, VGA, RS232 and USB connectivity



High precision touch



Super glide surface

Clever Message

NEW

24/7 digital signage

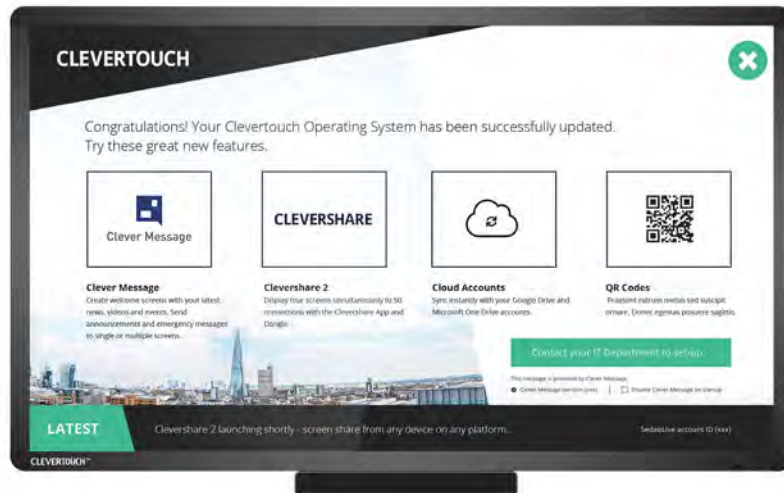
Turn your Clevertouch into an interactive digital signage kiosk.

Branded power-up screen

Get your organization's daily news when you power-up each day.

Live video streaming

Broadcast live or pre-recorded audio and video to your screens.



Instant messaging

Send instant or timed messages to any of your Clevertouch screens remotely.

Alerts

Send important announcements at the touch of a button.

Group your screens

Send messages to groups of Clevertouch displays simultaneously.

Clever Message Features



Add your logo



Customize with your colors



Add images and slideshows

RSS

Create RSS feeds



Live video messages



Add video and movies



Insert documents (pdf, word)



Add web pages



Touch Compatible



Add clocks with date and time



Add sound



Add text boxes



Create animations



Schedule timed messages



Choose from hundreds of themed templates



Assign zones to different staff or departments



Create groups of screens



Works over multiple locations

Remote Management (MDM)

Control multiple Clevertouch devices, wherever they are

The Clevertouch MDM system enables help desks, IT administrators and project leaders to centrally manage and support hundreds of Clevertouch devices, wherever they are. Reaching well beyond the local network boundaries, our Centralised Management System delivers a bird's-eye view of an entire device fleet, enabling administrators to give the best support possible with optimal conditions for decision-making.

Extend your support umbrella, control capabilities and manage Clevertouch screens wherever they are located and operating, both inside and beyond the organisation's network. Manage mission critical and complex IT infrastructures and simplify demanding operation and maintenance work on multiple devices.

Control hundreds of Clevertouch devices remotely

- Create groups to make sure each screen has the most suitable apps and files for where it is used, such as C-Suite, Design Studios, Maths Class, Reception Class, corporate boardroom, huddle room, etc.
- Take control of the Clevertouch screen from your desktop
- Install APKs, policies and files
- Push messages directly to the Clevertouch display, ideal for security announcements
- Anti-theft module – Lock, unlock and reset displays
- Restart or shutdown multiple screen/s remotely by a single click
- Wipe the screen
- Run diagnostics

Optionally, Clevertouch MDM can serve as the basis for managing other devices in the organisation (Android, Windows, iOS and Chrome OS) from a single console, such as desktops, laptops, tablets and smartphones.

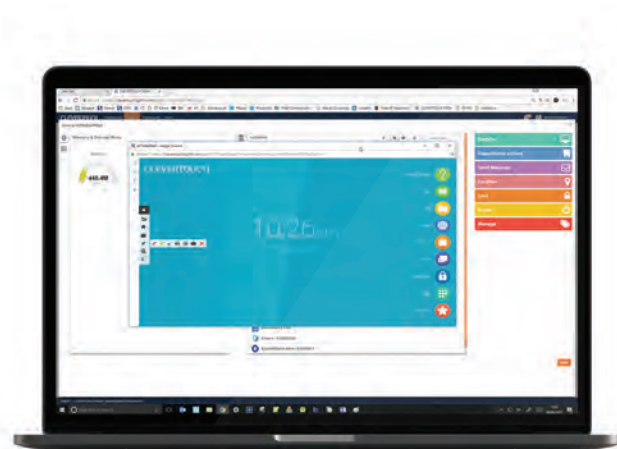
Instant Updates (OTA)

Updates delivered instantly

The new Over-the-Air technology means that new features, bug fixes, software and hardware updates can be seamlessly delivered to every Clevertouch screen.

With just the click of a button the Clevertouch screen will search for the latest firmware update and install it, giving you instant access to the latest apps and features.

Patch fixes no longer have to be downloaded onto a USB and uploaded manually, giving IT Managers more time and less hassle.



Clevertouch PC Modules



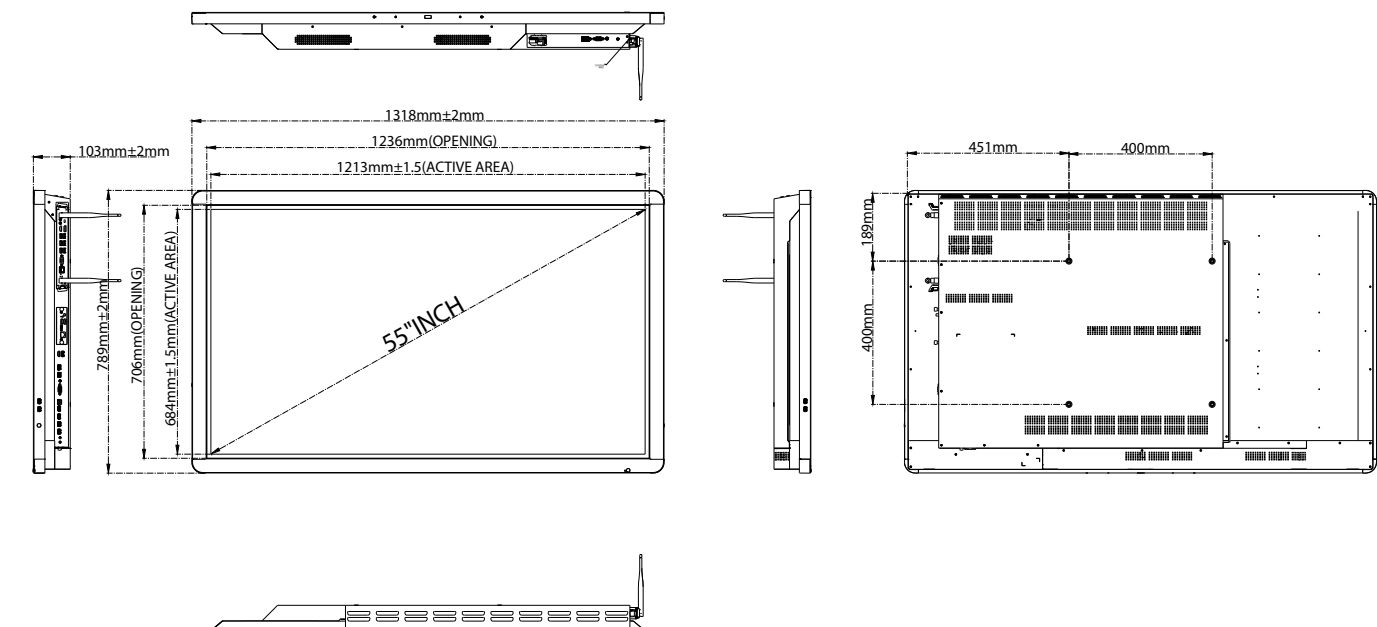
i5 PC Module

i7 PC Module

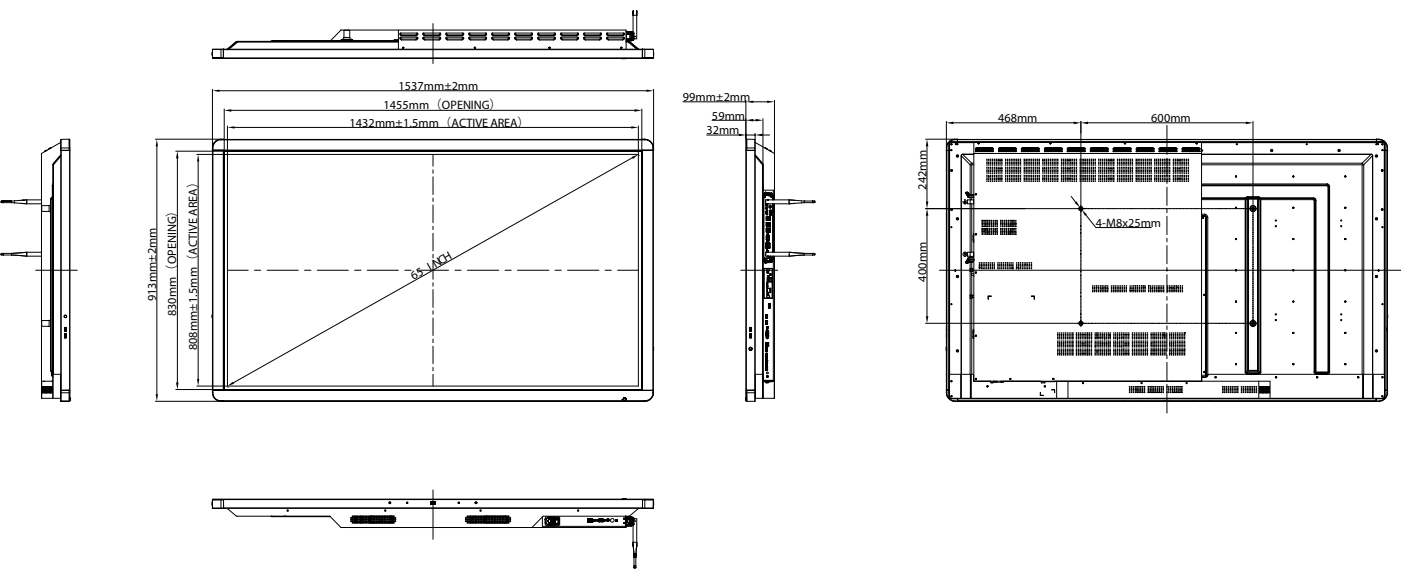
Product Code	1541041	1541042
PC		
Type	PC Module	PC Module
Model	MT21	MT21
CPU	Intel® Core™ i5	Intel® Core™ i7
RAM	DDR4 4Gb	DDR4 8Gb
SSD	128Gb	256Gb
Graphics	Integrated Intel® HD Graphics/Independent Graphics	Integrated Intel® HD Graphics/Independent Graphics
Chipset	Intel H110 Express	Intel H110 Express
Sound Card	Integrated High Definition Audio Stereo	Integrated High Definition Audio Stereo
Networking	Integrated 10/100/1000M Adaption	Integrated 10/100/1000M Adaption
WIFI	802.11ac (2.4GHz/5GHz)	802.11ac (2.4GHz/5GHz)
Operation System	Windows 10 Pro installed	Windows 10 Pro installed
USB3.0	6	6
LAN(RJ45)	1	1
VGA Output	1	1
Earphone Output	1	1
Microphone Input	1	1
Display Port	1	1
HDMI Output	1	1
Power		
Power Supply Mode	Internal Power Supply Module	Internal Power Supply Module
Power Requirements	100-240V~ 50/60Hz	100-240V~ 50/60Hz
Max Power	95W	95W
Standby Power	1.35W	1.35W
Physical Specs		
Cover Material	SECC	SECC
Dimension L x W x H	246.2 x 265.4 x 32.2mm	246.2 x 265.4 x 32.2mm
Net Weight	1.9kg	1.9kg
Environmental Conditions		
Operation Temperature	0°C – 45°C	0°C – 45°C
Operation Humidity	10% – 90%	10% – 90%
Storage Temperature	-20°C – 60°C	-20°C – 60°C
Storage Humidity	10% – 90%	10% – 90%
ESD		
Contact Discharge	±4KV passed level A test(CB)/ ±6KV passed level B test(CB)	±4KV passed level A test(CB)/ ±6KV passed level B test(CB)
Non-contact Discharge	10% ±8KV passed level A test(CB)/ ±12KV passed level B test(CB)	10% ±8KV passed level A test(CB)/ ±12KV passed level B test(CB)

	55"	65"	75"	86"
Product Code	15455LUXHP	15465LUXHP	15475LUXHP	15486LUXHP
Display				
Screen Type	LED	LED	LED	LED
Aspect Ratio	16:09	16:09	16:09	16:09
Resolution	4K Ultra HD	4K Ultra HD	4K Ultra HD	4K Ultra HD
Backlight	D-LED	D-LED	D-LED	D-LED
Brightness (cd/m²)	350	350	350	350
Response Time	8ms	8ms	8ms	8ms
Audio	2 x 12W	2 x 12W	2 x 12W	2 x 12W
Android	✓	✓	✓	✓
Glass	Anti Glare	Anti Glare	Anti Glare	Anti Glare
Super Glide Surface	✓	✓	✓	✓
Contrast Ratio	1200:1	1200:1	1200:1	1200:1
Interactive System				
Touch Points	20	20	20	20
Sensor Type	High Precision IR	High Precision IR	High Precision IR	High Precision IR
Minimum Object Size (mm)	3	3	3	3
Response Time (Touch)	< 15ms	< 15ms	< 15ms	< 15ms
Connectivity				
USB 2.0 / 3.0 / Touch	4 / 2 / 1	4 / 2 / 1	4 / 2 / 1	4 / 2 / 1
HDMI 1.4 In / 2.0 in	0 / 2	0 / 2	0 / 2	0 / 2
DisplayPort in	0	0	0	0
VGA Input	1	1	1	1
HDMI Out	1	1	1	1
CVBS (requires a 3.5mm to 3 x phono socket, not included)	✓	✓	✓	✓
PC-Audio	✓	✓	✓	✓
VGA Output	✗	✗	✗	✗
LAN (RJ45)	✓	✓	✓	✓
RS232	✓	✓	✓	✓
Android Module Slot	✓	✓	✓	✓
PC Module Slot	✓	✓	✓	✓
Power				
Power	250W	300W	450W	500W
Power (in standby)	<0.5W	<0.5W	<0.5W	<0.5W
EU Energy Rating – Efficiency Class	B	A+	C	B
Physical Specifications				
Dimensions W x H x D (mm / ")	1318 x 789 x 103 / 51 57/64 x 31 1/16 x 4 1/16	1537 x 913 x 99 / 60 33/64 x 35 15/16 x 3 57/64	1779 x 1032 x 100 / 70 3/64 x 40 5/8 x 3 15/16	2004 x 1176 x 99.6 / 78.9 57/64 x 46 19/64 x 3 59/64
Weight	36.5kg / 80lb 7.4oz	49kg / 108lb	57.8kg / 127lb 6.8oz	73.7kg / 162lb 8oz
VESA (mm / ")	400 x 400 / 15 3/4 x 15 3/4	600 x 400 / 23 5/8 x 15 3/4	800 x 400 / 31 1/2 x 15 3/4	800 x 600 / 31 1/2 x 23 5/8
Android Capabilities				
Remote Management (MDM)	5 Year	5 Year	5 Year	5 Year
Instant Updates (OTA)	✓	✓	✓	✓
System Version	LUX 7 (powered by Android 7.1 Nougat)			
CPU	RK3399 Dual-core ARM Cortex A72 and Quad-core ARM Cortex-A53			
Android Resolution	1080p	1080p	1080p	1080p
GPU	Mali-T860	Mali-T860	Mali-T860	Mali-T860
RAM	4G	4G	4G	4G
ROM	16GB	16GB	16GB	16GB
Wi-Fi Enabled	✓	✓	✓	✓
Apps and Android Features				
Whiteboard App	✓	✓	✓	✓
Email Out	✓	✓	✓	✓
Cleverstore	✓	✓	✓	✓
Lynx App	✓	✓	✓	✓
Lynx Pro	✗	✗	✗	✗
Clever Message – 24/7 Dynamic Messaging Service NEW	✓	✓	✓	✓
Dual pen mode NEW	✓	✓	✓	✓
Clevershare 2 App NEW	✓	✓	✓	✓
Software				
Lynx	✓	✓	✓	✓
Snowflake	✓	✓	✓	✓
DisplayNote	✓	✓	✓	✓
Montage	✗	✗	✗	✗
LynxPro Meeting	✗	✗	✗	✗
Stage	✗	✗	✗	✗
Accessories				
i5 PC Module included (1541041)	✗	✗	✗	✗
USB Camera Ability	✓	✓	✓	✓
Writing Pen or Stylus	2	2	2	2
VGA, Audio Cables	✓	✓	✓	✓
HDMI, USB Cables	✓	✓	✓	✓
Clevershare 1541052	Available separately	Available separately	Available separately	Available separately
Smart Personalised Profile Account (Pen Tray & NFC 1541053) NEW	✓	✓	✓	✓

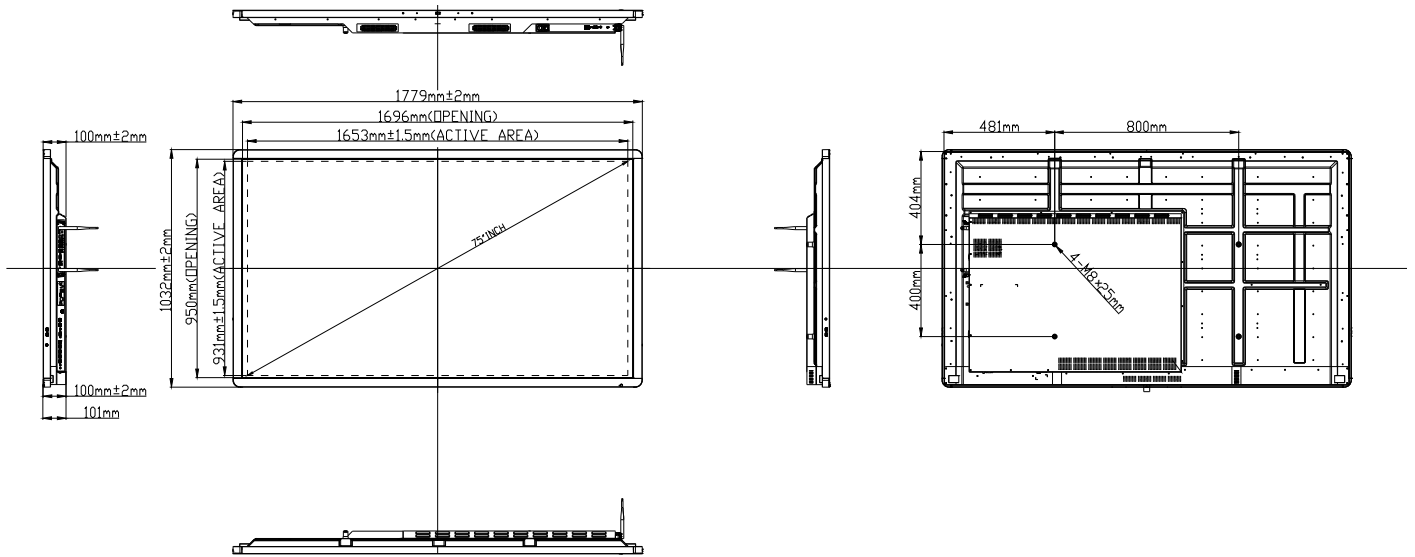
55"



65"



75"



86"

